

KARIBAN

1/3

REFERENCE : K241

NAME :

SIZES : S_M_L_XL_XXL_3XL_4XL

COMPOSITION :

Main fabric : Good carded cotton pique 210 For white color 100%cotton

Main fabric : Good carded cotton pique 220 100%cotton

Main fabric : Good carded Cotton/Viscose pique 90/10 - 220 90%cotton/10%viscose

WEIGHT :

Main fabric : 210 gsm

Main fabric : 220 gsm

Main fabric : 220 gsm

DESCRIPTION

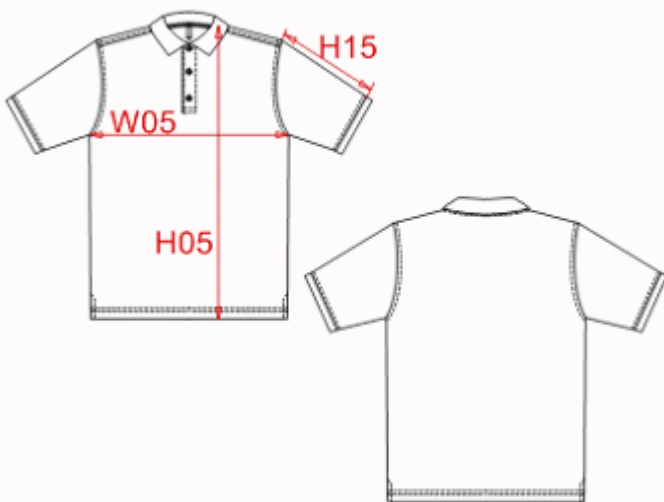
- Français :** Polo homme manches courtes
- English :** Men's short sleeve pique polo shirt
- Nederlands :** Heren polo met korte mouwen
- Deutsch :** Herren kurzarm polohemd pique
- Español :** Polo de manga corta
- Italiano :** Polo pique' uomo maniche corte
- Português :** Polo pique manga curta

CARE LABEL



MEASUREMENT

Description	S	M	L	XL	XXL	3XL	4XL
H05 Hauteur totale / Total height	72,50	74,50	76,50	78,50	80,50	83,25	86
W05 1/2 largeur poitrine / 1/2 chest width	50	53	56	59	62	66	70
H15 Longueur manche / Sleeve length	18	19	20	21	22	23,20	24,40



PACKING

Box	25 pcs / box S => L:54cm W:39cm H:20cm GW:7.00kg NW:5.50kg M => L:54cm W:39cm H:20cm GW:7.40kg NW:5.90kg L => L:58cm W:41cm H:20cm GW:7.90kg NW:6.30kg XL => L:59cm W:41cm H:20cm GW:8.30kg NW:6.70kg XXL => L:62cm W:43cm H:20cm GW:8.80kg NW:7.10kg 3XL => L:70cm W:45cm H:20cm GW:9.30kg NW:7.50kg 4XL => L:70cm W:45cm H:20cm GW:9.70kg NW:7.90kg
-----	---

KARIBAN

REFERENCE : K241

SIZES : S_M_L_XL_XXL_3XL_4XL

COMPOSITION :

Main fabric : Good carded cotton pique 210 100%cotton

Main fabric : Good carded cotton pique 220 100%cotton

Main fabric : Good carded Cotton/Viscose pique 90/10 -
220 90%cotton/10%viscose

WEIGHT :

Main fabric : 210 gsm

Main fabric : 220 gsm

Main fabric : 220 gsm

FABRIC CONSTRUCTION AND FINISHING :

NAME :

COLORS	PANTONE SERIGRAPHIE
White	White
Black	Black
Navy	2965C
Red	186C
Dark grey	432C
Dark khaki	418C
Sky blue	7695C
Orange	1585C
Yellow	123C
Light royal blue	2935C
Chocolate	439C
Tropical blue	633C
Oxford grey	Cool gray 6C
Kelly green	340C
Fuchsia	7635C
Purple	7447C
Wine	504C
Lime	367C
Forest green	567C